

## **Project Title**

Use of Failure Mode and Effect Analysis (FMEA) to reduce risk of medication errors in medication delivery service in outpatient oncology pharmacy.

## **Project Lead and Members**

- Caroline Liow Jia Li<sup>1</sup>
- Cheryl Heng Zi Hui<sup>2</sup>
- Vincent Ngo Kang Hao<sup>2</sup>
- Leow Jo Lene<sup>2</sup>
- Lita Chew<sup>1, 2</sup>

<sup>1</sup>Department of Pharmacy, Faculty of Science, National University of Singapore, Singapore.

<sup>2</sup>Department of Pharmacy, National Cancer Centre Singapore, Singapore

## **Organisation(s) Involved**

National Cancer Centre Singapore

## **Healthcare Family Group Involved in this Project**

Medical, Pharmacy

## **Applicable Specialty or Discipline**

Oncology

## **Aims**

- To investigate the potential failure modes of MDS processes in an outpatient oncology pharmacy using Failure Mode and Effect Analysis (FMEA).
- To recommend corrective measures to minimise risks in areas with higher Risk Priority Numbers (RPNs).

## **Background**

See poster appended / below

## **Methods**

See poster appended / below

## **Results**

See poster appended / below

## **Conclusion**

See poster appended / below

## **Additional Information**

Singapore Healthcare Management (SHM) Conference 2021 – 1<sup>st</sup> Prize (Risk Management Category)

## **Project Category**

Care & Process Redesign, Value Based Care, Safe Care, Risk Management, Care Continuum, Outpatient Care, Specialist Outpatient Clinics

## **Keywords**

Failure Mode and Effect Analysis, Risk Priority Numbers, Medication Delivery Service, COVID-19, National Pharmacy Strategy, Risk Analysis Tool, Prospective Observational Study, Lean, 5S System

## **Name and Email of Project Contact Person(s)**

Name: Ngo Kang Hao Vincent

Email: singaporehealthcaremanagement@singhealth.com.sg



# Use of FMEA to reduce the risk of errors for medication delivery service in outpatient oncology pharmacy

Singapore Healthcare Management 2021

Caroline Liow Jia Li<sup>1</sup>; Cheryl Heng Zi Hui<sup>2</sup>; Vincent Ngo Kang Hao<sup>2</sup>; Leow Jo Lene<sup>2</sup>; Lita Chew<sup>1,2</sup>

<sup>1</sup>Department of Pharmacy, Faculty of Science, National University of Singapore, Singapore.  
<sup>2</sup>Department of Pharmacy, National Cancer Centre Singapore, Singapore

## INTRODUCTION

- National Cancer Centre Singapore (NCCS) saw an increase in demand of medication delivery service (MDS) during the COVID pandemic and its quick adoption could potentially increase the risk for medication errors
- MDS is also part of the National Pharmacy Strategy to provide patients with timely and convenient access to medication<sup>1</sup>
- Failure Mode and Effect Analysis (FMEA) is a risk analytical tool employed in this study to identify known and potential errors ('failure modes') and assign Risk Priority Numbers (RPNs) to the failure modes by taking the product of severity, occurrence and detectability based on a scale of 1 to 5 (Table 1)
- Areas with higher RPNs are prioritised for corrective interventions<sup>2,3</sup>

## OBJECTIVES

- To investigate the potential failure modes of MDS processes in an outpatient oncology pharmacy using FMEA
- To recommend corrective measures to minimise risks in areas with higher RPNs.

## METHODS

### Study design

- A prospective observational study conducted at the Specialist Outpatient Clinic (SOC) pharmacy of NCCS, from June to September 2020



### Sample size

- Preliminary risk analysis:** n=19, mean practice period=8.58 years (SD 9.90)
- Final risk analysis:** n=8, mean practice period=11.80 years (SD 12.80)

Table 1. Rating Scale of 1 to 5 to calculate RPN

Score	Severity	Occurrence	Detectability
1	Negligible	Less than once a year	Almost certain
2	Minor	Yearly	Moderately high
3	Moderate	Quarterly	Low
4	Major	Monthly	Remote
5	Catastrophic	Weekly	Absolute uncertain

### Use of 5S Lean Manufacturing in Step 5

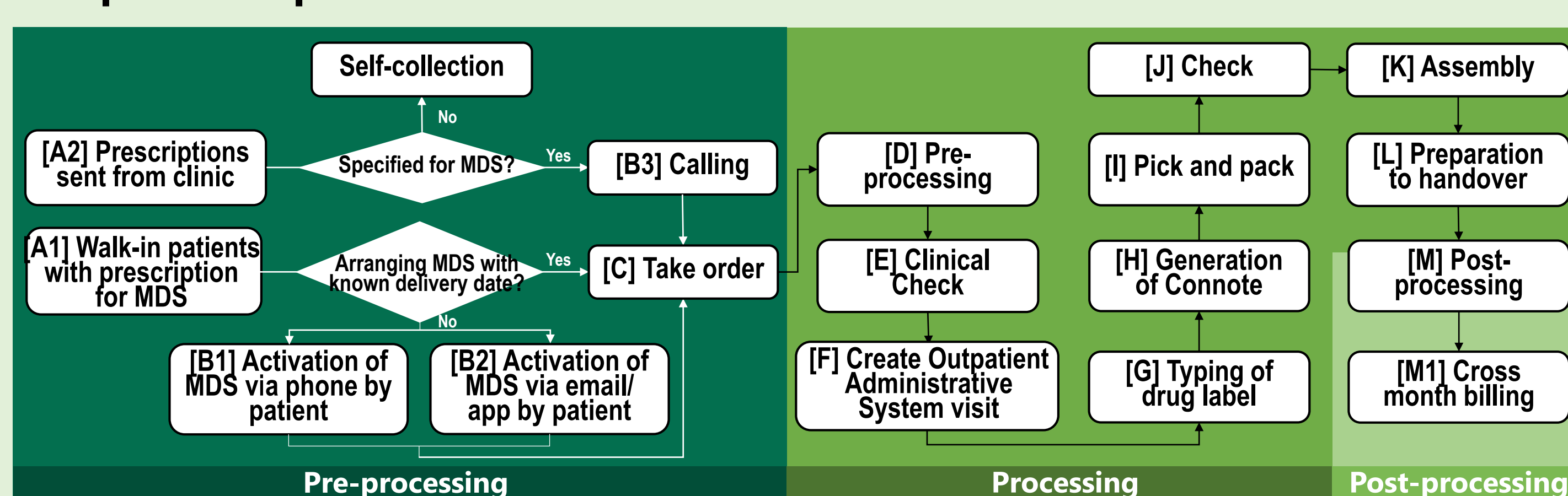
- Originally used as a housekeeping tool in production setting<sup>4</sup>, we adopted its concept to facilitate devising corrective actions in a more systematic manner
- 5S: **S**ort, **S**et in order/ **S**traighten, **S**hine/ **S**crub, **S**tandardise, **S**ustain

### Implementing Plan Do Study Act (PDSA) cycle

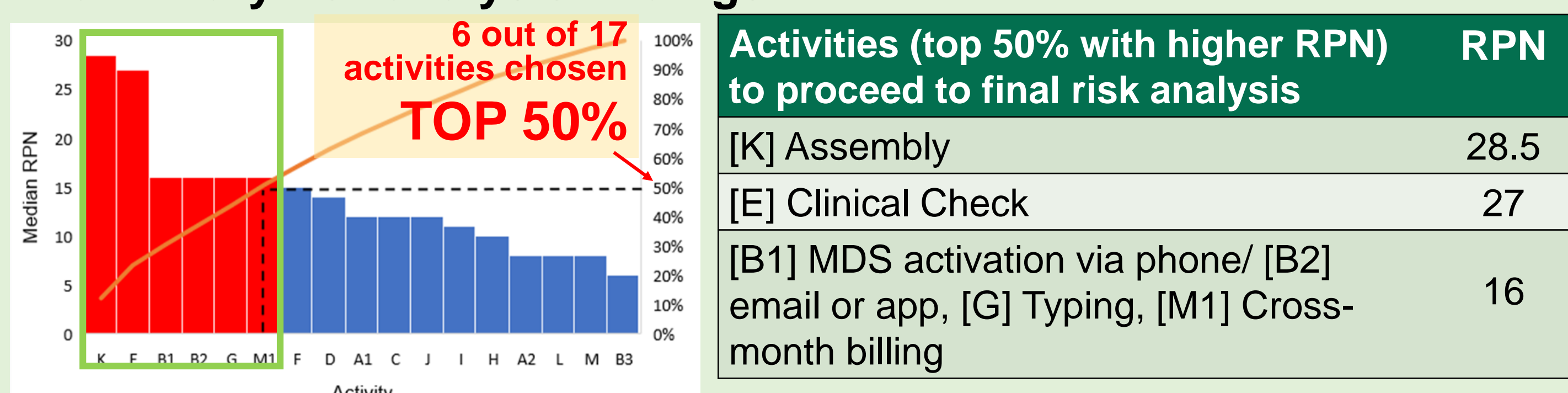
- Used to help to systematically plan the details and means of monitoring changes
- Monitor the reduction in near misses/ actual error rates
- Gather feedbacks from pharmacy staff

## RESULTS

### Graphical representation of MDS activities

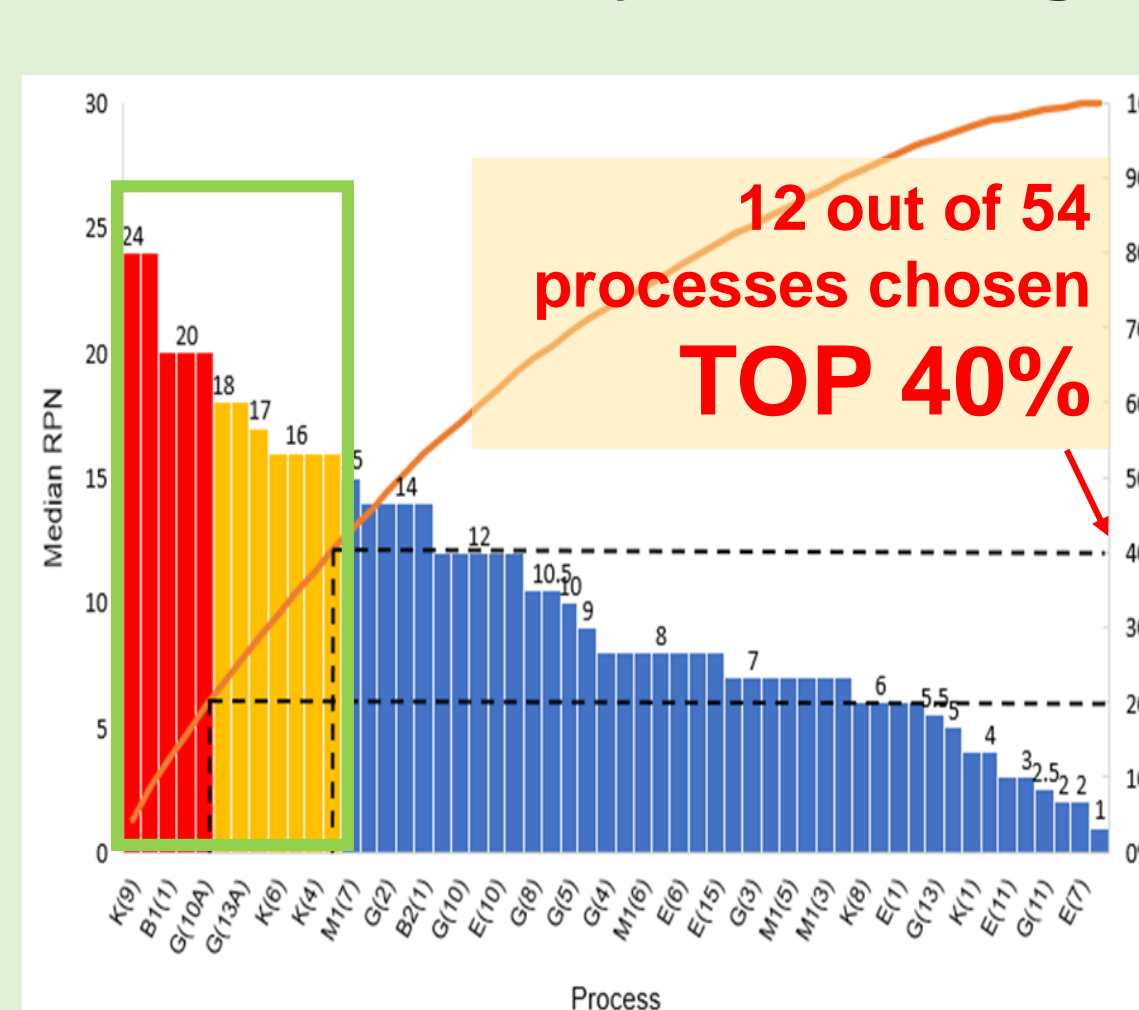


### Preliminary risk analysis findings



## RESULTS (cont.)

### Final risk analysis findings



### Proposed corrective actions

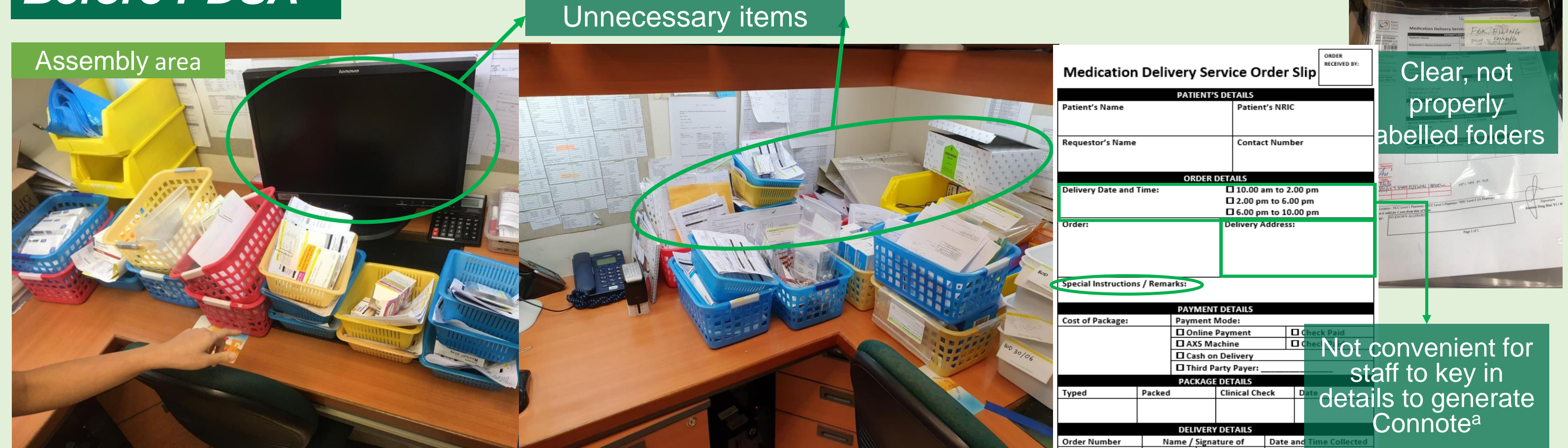
- 38 general and process-specific measures were devised using 5S methods: 2 sort, 14 set in order, 7 standardize, 3 shine and 12 sustain strategies
- Most focused on improving the modes of MDS activation, design of MDS order slip, and working environment, and reducing workload
- 8 were implemented in phase 1 of the PDSA, with positive reduction in incidence of near misses and encouraging feedback from pharmacists

### Improvements made during phase 1 of the PDSA

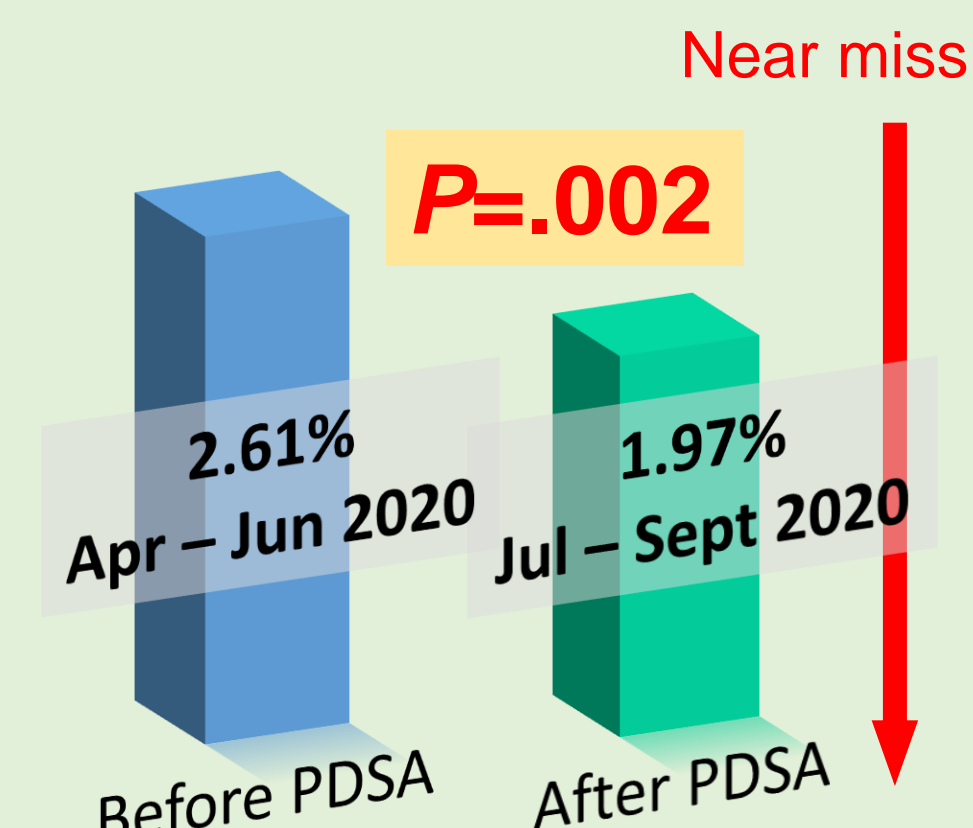
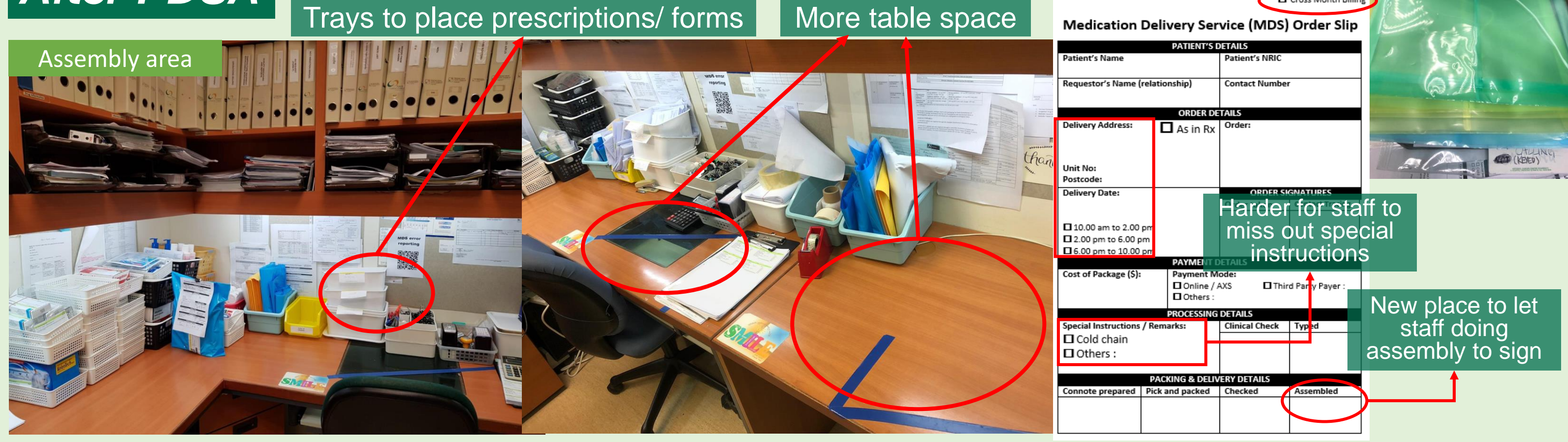
Sort	<ul style="list-style-type: none"> <li>Use colored, labelled folders to store prescriptions intended for storage or processing</li> <li>Sort the necessary and unnecessary to remove the unnecessary equipment/ items from assembly area</li> </ul>
Set in order	<ul style="list-style-type: none"> <li>Redesign the MDS order slip</li> <li>Change from white to colored paper to paste summary labels for cross-month billing</li> </ul>
Shine	<ul style="list-style-type: none"> <li>Place dedicated trays on table strategically to ensure easy access for staff doing assembly</li> </ul>
Sustain	<ul style="list-style-type: none"> <li>Preparation of database to allow auto-population of patient details using NRIC to generate Connote<sup>b</sup></li> </ul>

<sup>b</sup> Connote: Delivery label with patient's delivery address and order number

### Before PDSA



### After PDSA



## DISCUSSION & CONCLUSION

- Majority of processes in MDS activation via phone and assembly were flagged out with higher RPNs. Both were critical as majority of MDS orders was activated by calling and assembly was the last activity before medications were sent out for delivery.
- Messy work environment, absence of measures to ensure protected space and time for staff doing assembly, and lack of standardised way of assembling medications were some major problems identified.
  - Immediate solution: increase number of telephone lines and dedicated phone receptionists; long-term solutions: promote use of email and mobile applications to facilitate convenient activation of MDS.
  - Improve IT software to allow electronic transmission of medication order for auto-populations of fields to produce drug labels.
  - The study highlighted the shortcomings of near-misses self-reporting system. Improvement to the system is needed to allow staff to report – when, where and how the near-miss occurred.
- FMEA findings helped to illustrate the complex nature of MDS and prioritised various critical key failures for corrective actions.

### Acknowledgement

We would like to thank all the SOC pharmacists and pharmacy technicians in NCCS for their participation in the surveys and assistance in the recommendations of corrective actions.

### Reference

- Ministry of Health Singapore. National Pharmacy Strategy Information Pack. 2020.
- Stamatis DH. Failure Mode and Effect Analysis: FMEA from Theory to Execution.; 1995.
- Young FY. Int J Bus Soc Sci. 2014;5(10)
- Hughes RG. Patient Safety and Quality: An Evidence-Based Handbook for Nurses. 2008