

**Sustainability measures
within the Healthcare setting
will compromise the Quality
of Healthcare**

The Pragmatic Doctor's View

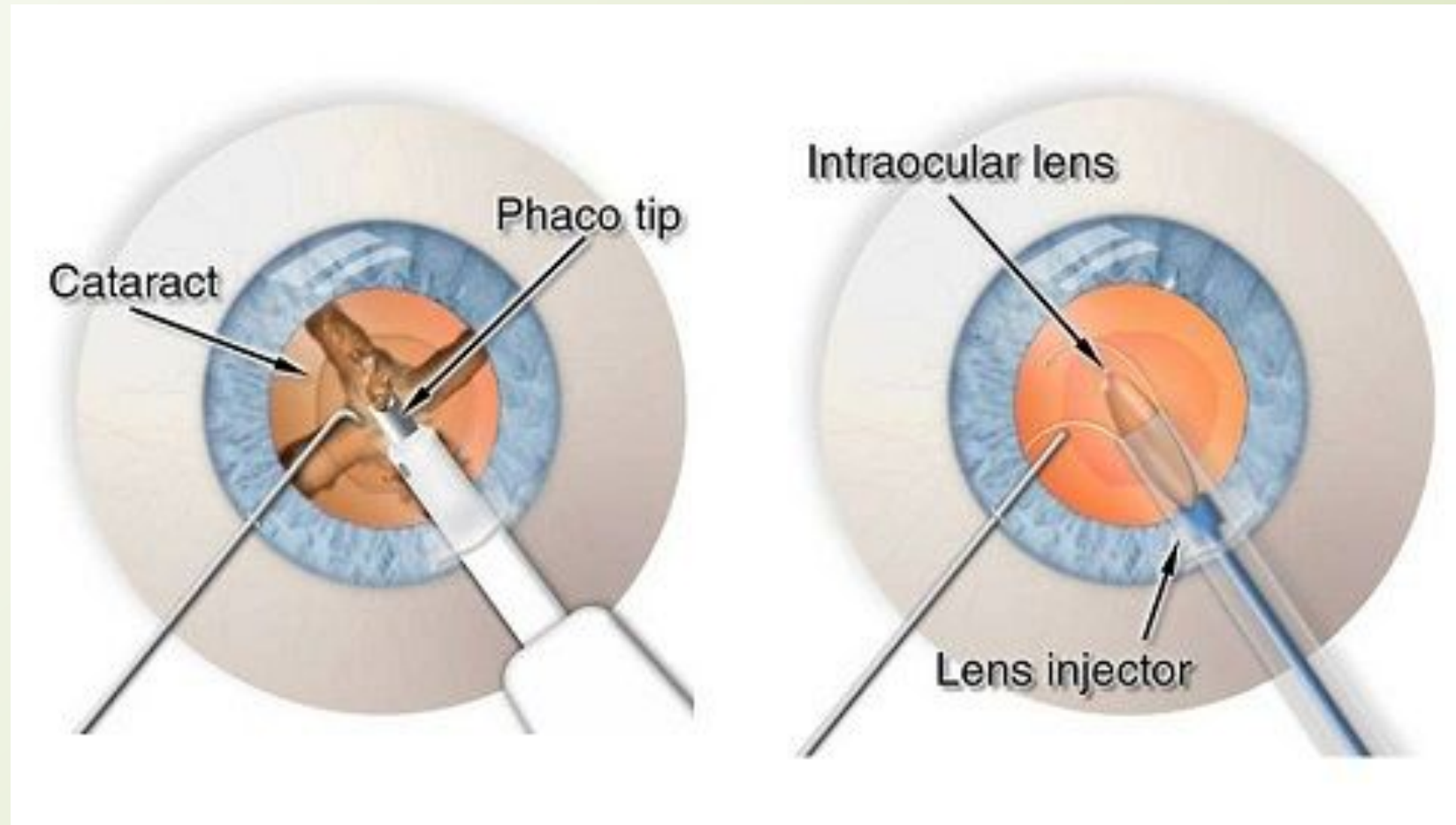


5 tonnes of CO₂



Cataract Surgery

- The carbon footprint for one cataract operation was 181.8 kg CO₂eq.
- 41 kg carbon dioxide equivalents (CO₂e) to 130 kg CO₂e per phacoemulsification.
- Carbon footprint of intraocular lens – not quantified
- NUHS performs >3000 cases per year



Holy Trinity – Cheap, Fast, Good

- Singaporeans understand the value of \$1



COVID-19 VACCINE SUPPLY CHAINS

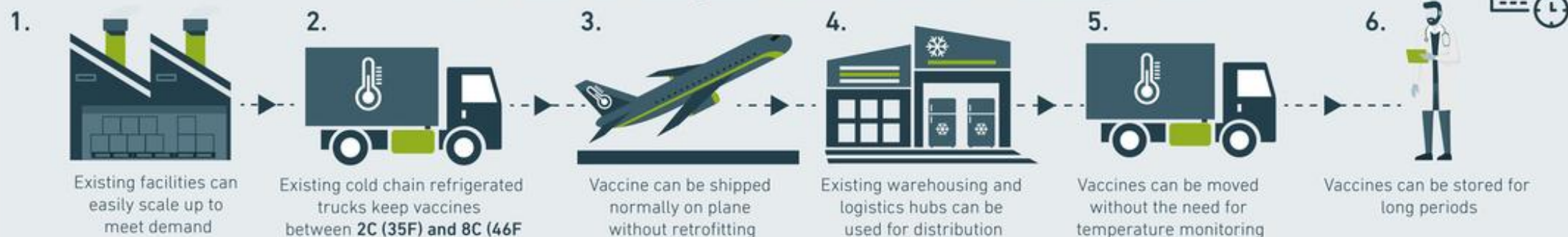
Cold chain 1: mRNA Vaccine

Shipments must maintain temperatures between **-78C (-109F)** and **-20C (-4F)** from manufacturer to end user. This requires the construction of new warehouses and upgrading of air and road transport.



Cold chain 2: Viral Vector Vaccine

Shipments can be stored at ambient temperatures between **2C (35F)** and **8C (46F)** from manufacturer to end user. This can make use of existing cold chain infrastructure and be more easily distributed.

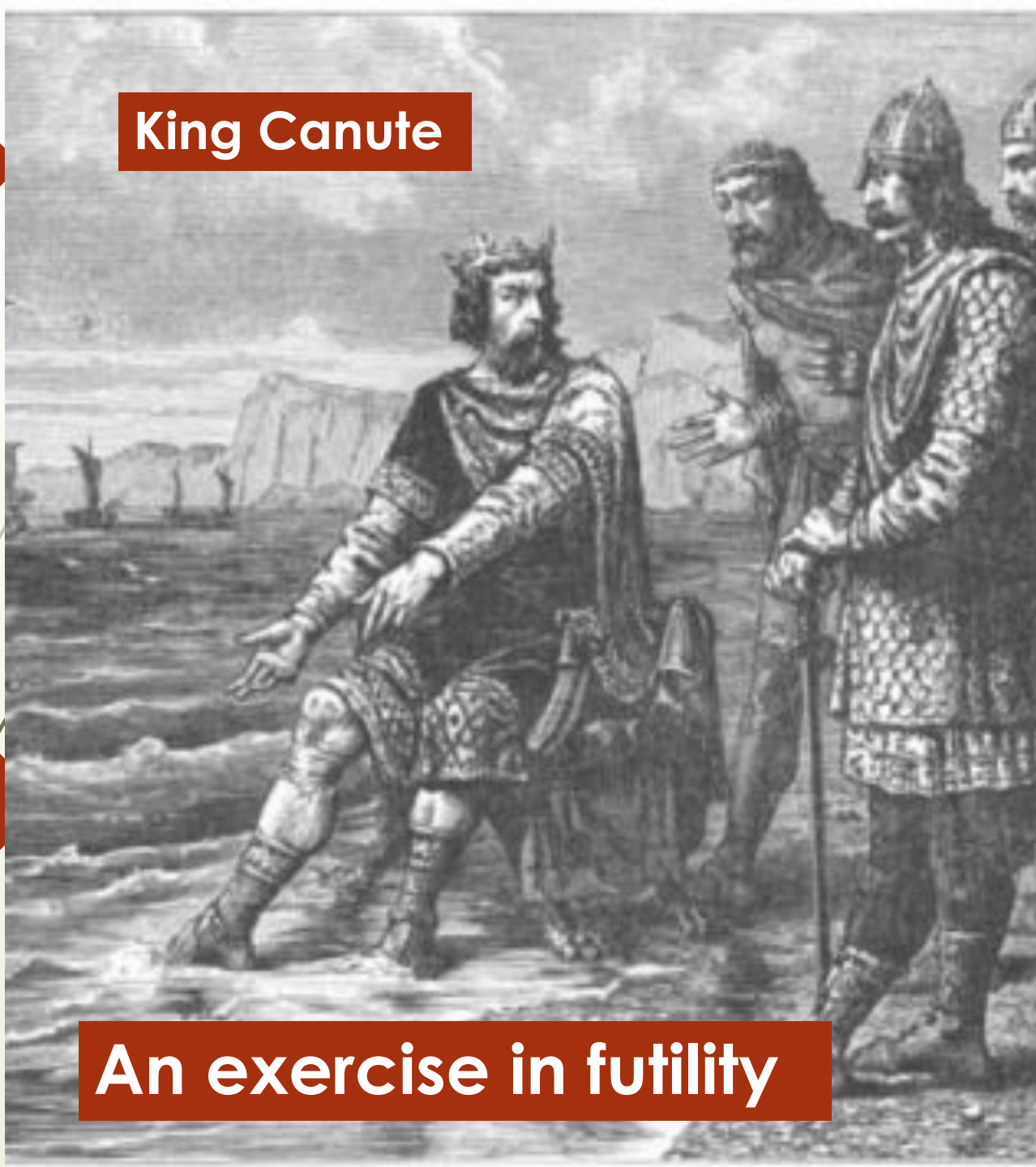


Sustainable “green” healthcare

4-5% of global
Greenhouse
Gases (GHG)



King Canute



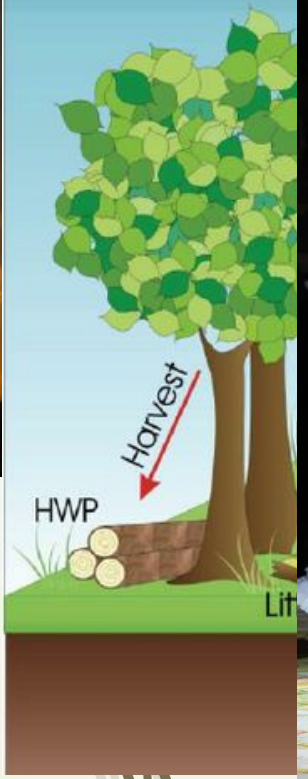
An exercise in futility

What makes up the other 95-96% of GHG?

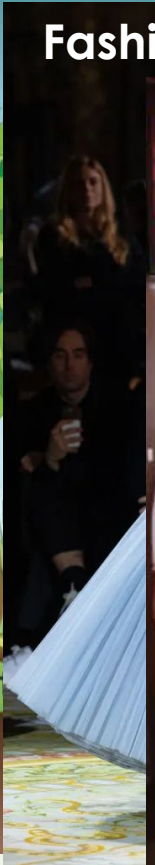
What makes up the other 95-96% of GHG?

Fossil Fuels

Agriculture



Fashion



Food Retail



Transport



Construction






Sengkang
General
Hospital

The background of the slide is a photograph of a cement plant. It features several tall, cylindrical silos, some with yellow and grey bands. In the foreground, there are large, conical piles of light-colored cement powder. The sky is a clear, pale blue. On the left side of the slide, there is a decorative graphic consisting of a dark red arrow pointing right, and several thin, grey, curved lines that resemble stylized tree trunks or roots.

an average of 11.5 million m³ of concrete per year

The CO₂ produced for the manufacture of structural concrete (using ~14% cement) is estimated at 410 kg/m³

One tree can offset 27kg -31.5kg CO₂/tree

150 million trees

Plant 10 feet apart, 400 trees per acre

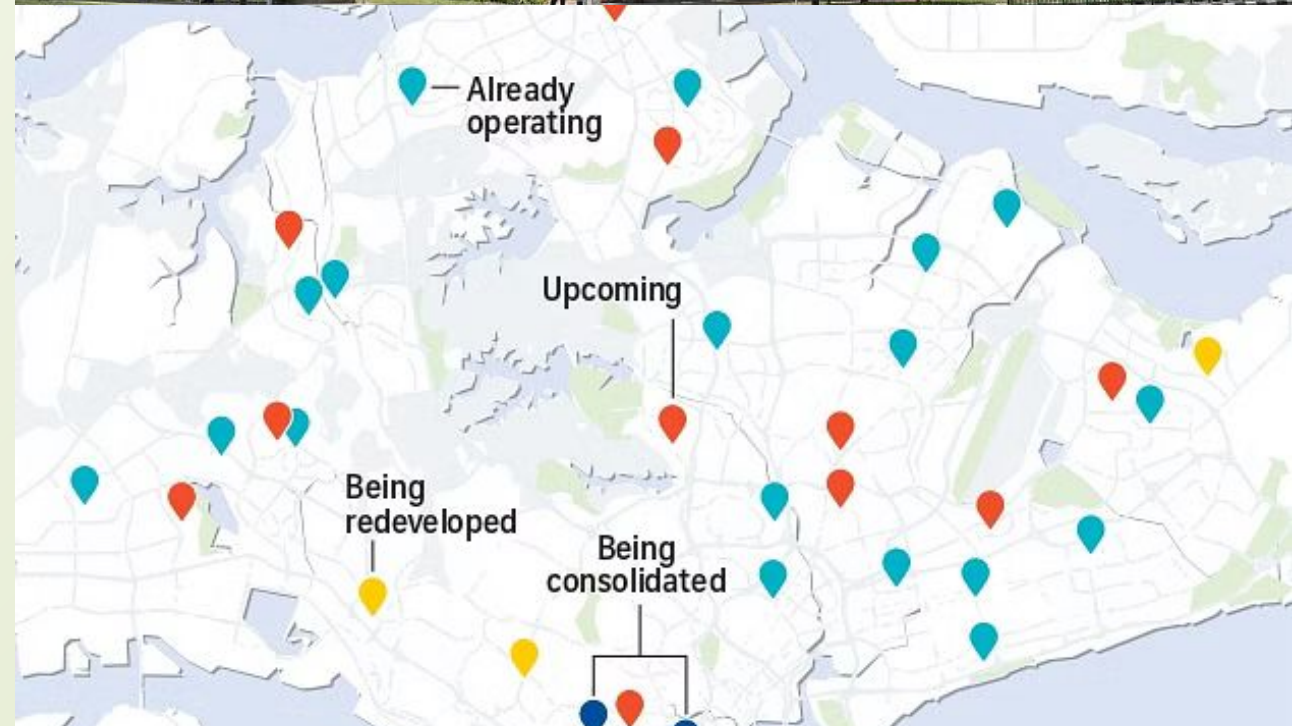
374,200 acres



734.3 Km² = 181,500 acres

By 2030:

12 new polyclinics



Since 2015, Singapore has opened 13 new hospitals and specialty centres


- NTFGH
- JCH
- Sengkang General hospital
- Sengkang Community Hospital
- Woodlands Health Campus
- TTSH - Integrated Care Hub
- New National Cancer Centre
- New National Skin Centre
- Yishun Community Hospital
- Outram Community Hospital
- CGH Medical Centre
- National University Centre for Oral Health
- National Centre for Infectious Diseases (NCID) & Centre for Healthcare Innovation (CHI)



....and by 2030.....

- Eastern Integrated Health Campus
- SGH Elective Care Centre & New National Dental Centre Singapore (NDCS)
- SGH Emergency Medicine Building
- Tengah General Hospital and Community hospital
- Alexandra Hospital redevelopment
- National University Hospital Redevelopment





So, all this construction, all this concrete, we know it's not environmentally friendly, but is it good for healthcare?????

□ Of course it is !!!!

□ Why?

**Singapore has
an
increasingly
elderly
population**



**and the “Gahmen” says we
need it !!!**



Sustainability measures within the Healthcare setting will compromise the Quality of Healthcare

- If you vote against the proposition, you are saying
- You don't want the **best treatment** in the **speediest** manner
- You would rather go **blind, lame** or **DIE !!!!**
- You don't want new healthcare facilities.....
-and the **government is wrong!!!**

So, do your **patriotic**
duty

**Vote "YES" to the
proposition**

