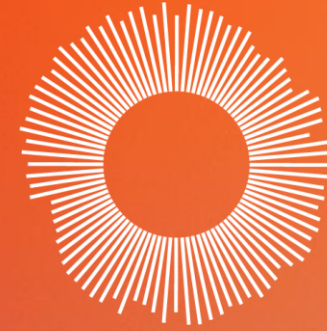




International
Hospital
Federation

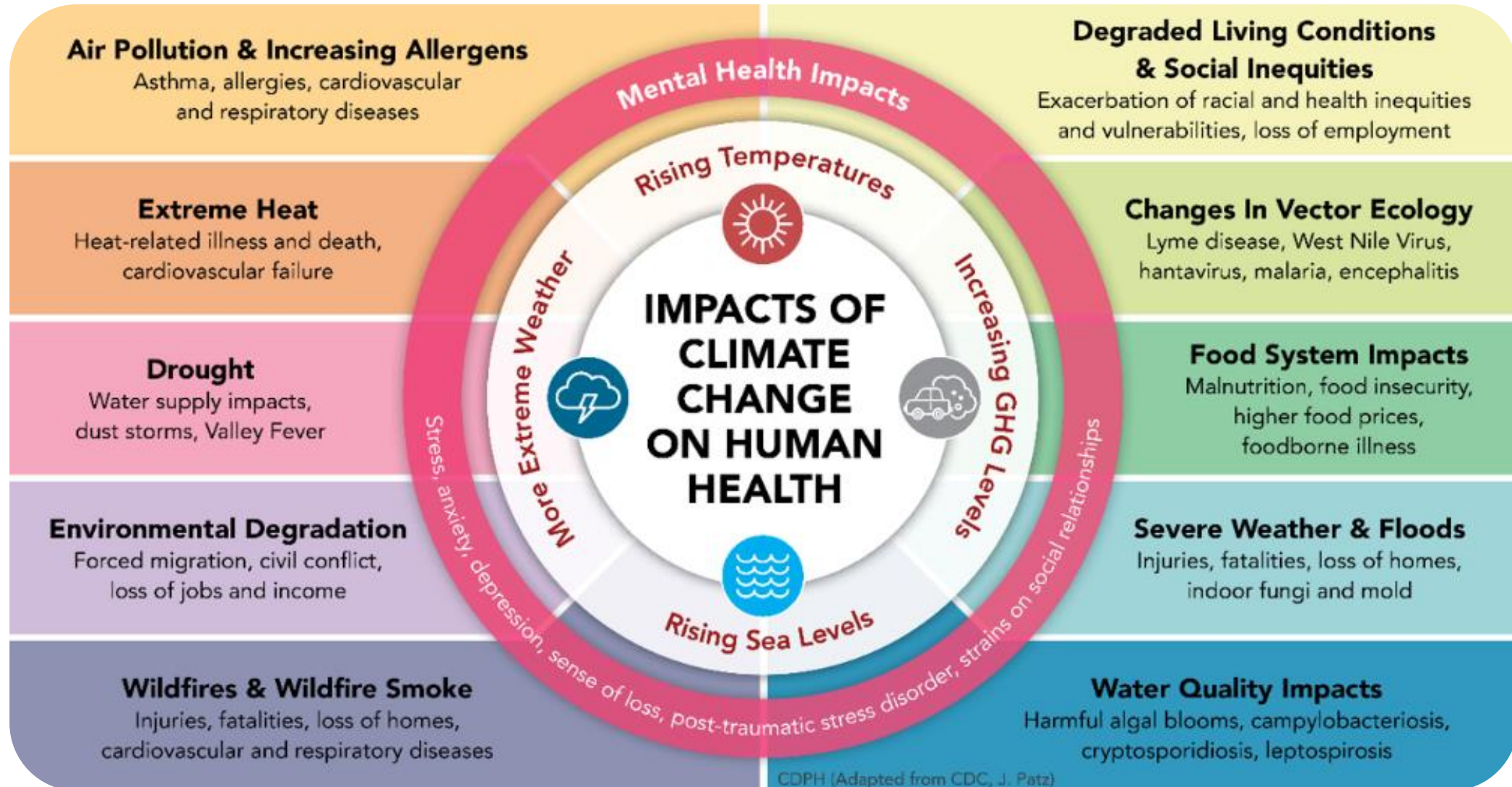


Geneva
Sustainability
Centre | Powered by
the IHF

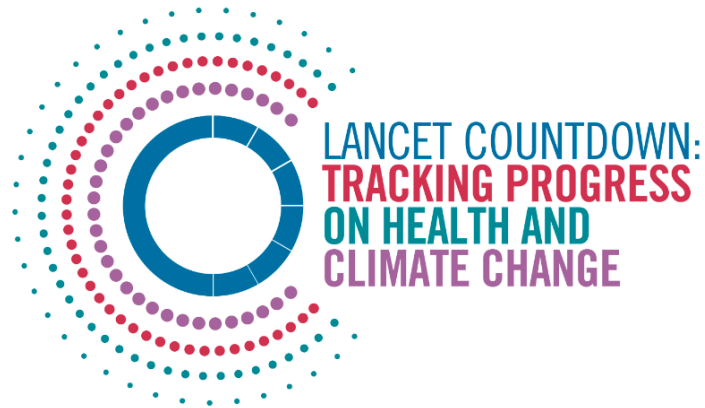
Accelerating action for sustainable healthcare

*Hospitals become leaders for
sustainability in their communities* ”

Impacts of climate change on health



Healthcare's climate footprint represents 4 - 6% of global net emissions



The 2023 Report of the Lancet Countdown: **The imperative for a health-centred response in a world facing irreversible harms**

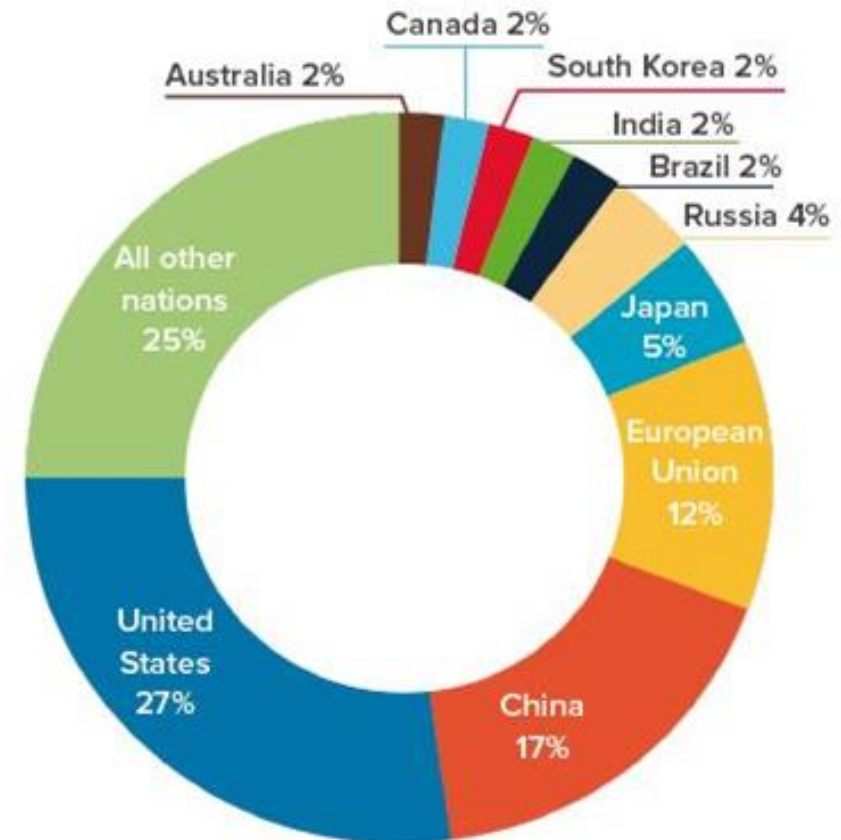


Figure 8: Top ten emitters as percentage of global health care footprint.



Singapore on the global stage

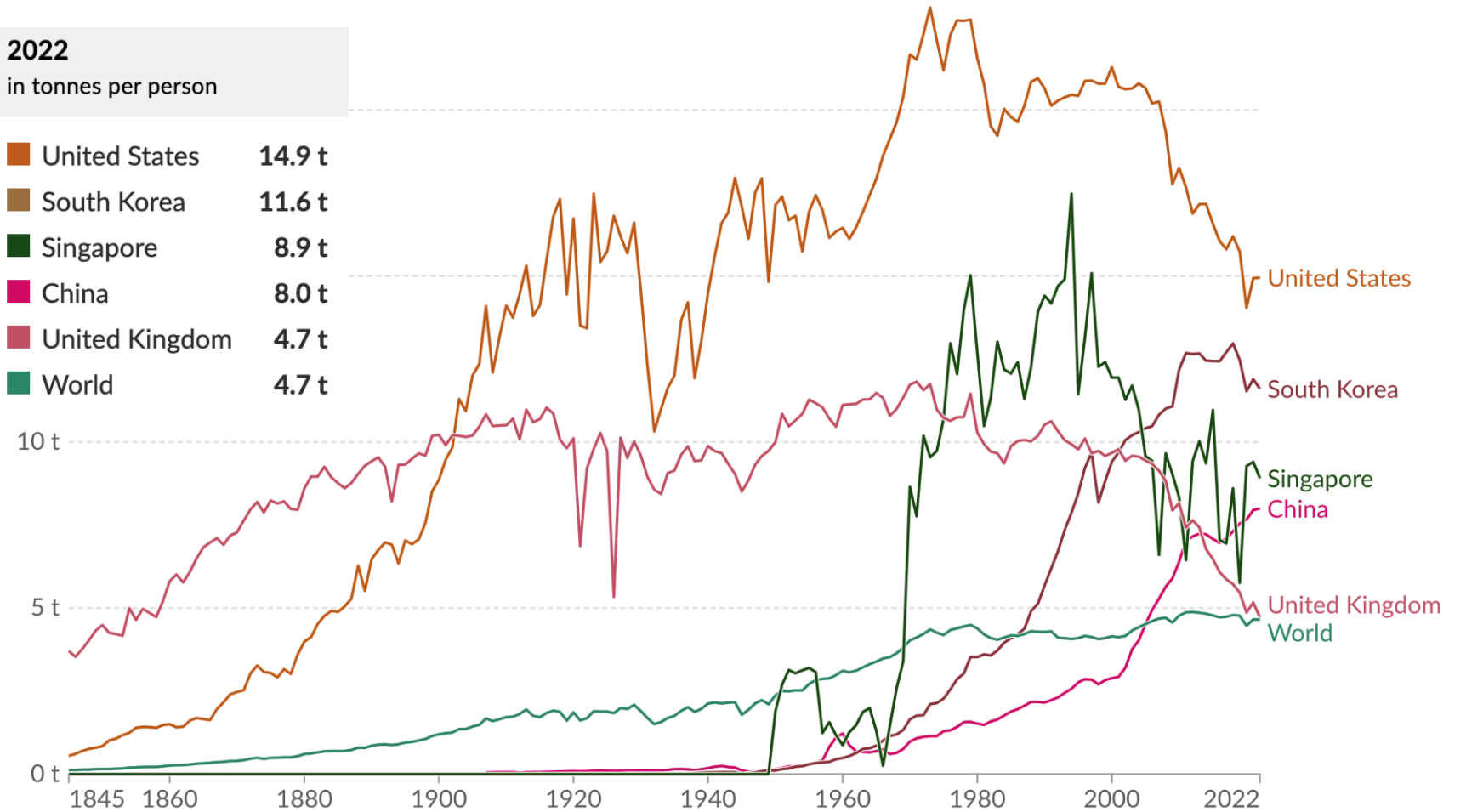
Per capita CO₂ emissions

Carbon dioxide (CO₂) emissions from fossil fuels and industry¹. Land-use change is not included.

2022

in tonnes per person

United States	14.9 t
South Korea	11.6 t
Singapore	8.9 t
China	8.0 t
United Kingdom	4.7 t
World	4.7 t



Data source: Global Carbon Budget (2023); Population based on various sources (2023)

OurWorldInData.org/co2-and-greenhouse-gas-emissions | CC BY

1. Fossil emissions: Fossil emissions measure the quantity of carbon dioxide (CO₂) emitted from the burning of fossil fuels, and directly from industrial processes such as cement and steel production. Fossil CO₂ includes emissions from coal, oil, gas, flaring, cement, steel, and other industrial processes. Fossil emissions do not include land use change, deforestation, soils, or vegetation.



Singapore's healthcare



Singapore - second globally in healthcare per capita emissions

[Singapore Medical Journal](#)

Urban hotspot of human exposure to high temperatures – potentially see 5°C increase by 2100

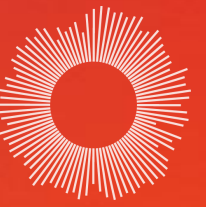
[Singapore Medical Journal](#)






Healthcare spending as a percentage of GDP = 8.8%

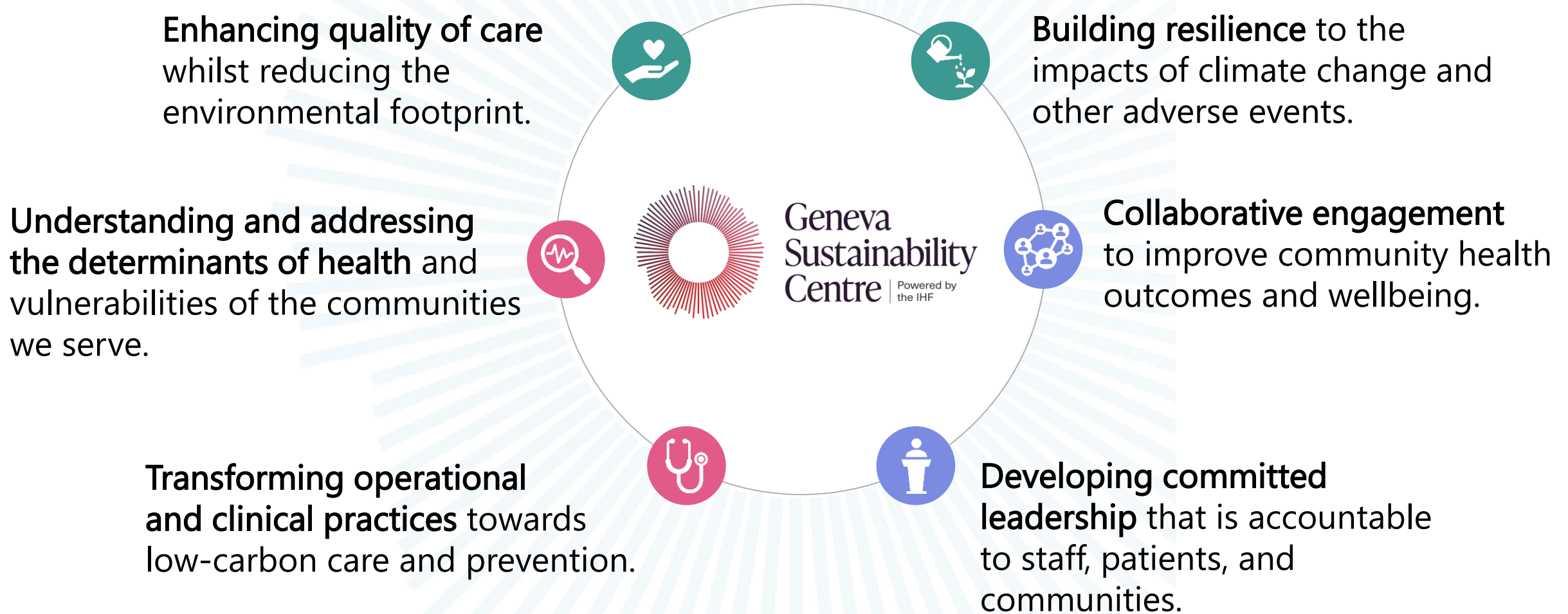
[Singapore – Health sector emissions](#)

Why does it matter to healthcare leaders in Singapore?

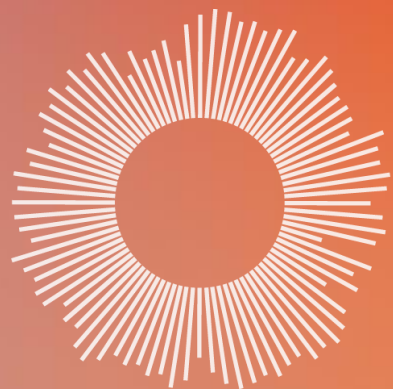


-  Singapore is expected to experience an economic loss of around \$2.22 billion per annum due to the impact of climate related events
-  This is an opportunity for healthcare leadership in Singapore to build capacity and resilience within their organizations
-  Healthcare leaders uniquely positioned, as they have a voice that matters and is trusted within the community. What you say and do matters

Low-carbon, resilient, and equitable healthcare



Value of Care



Value

=

Patient experience, clinical effectiveness,
patient safety

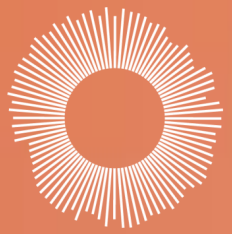


Outcomes for patients and populations

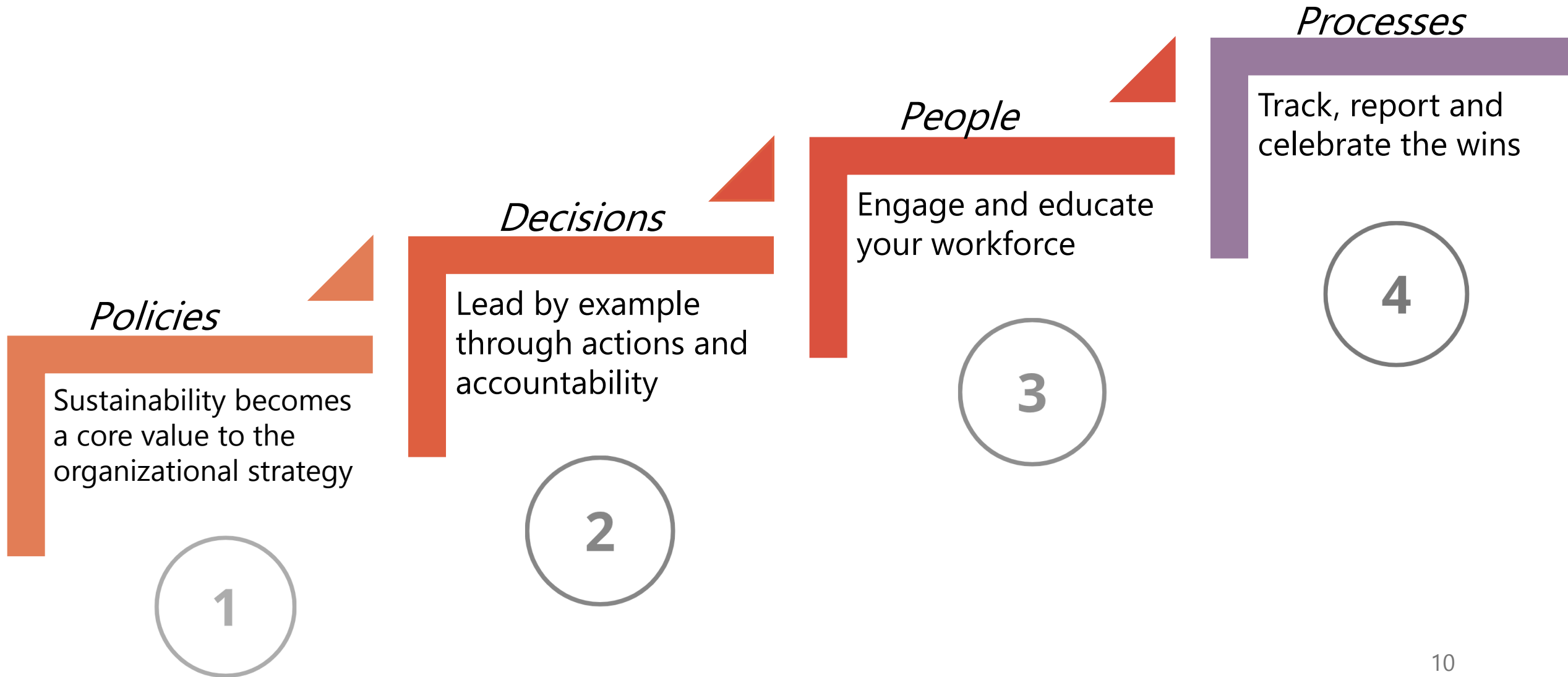
Environmental + social + financial impacts
(the 'triple bottom line')



Use of resources, emissions, equity &
fairness, finances

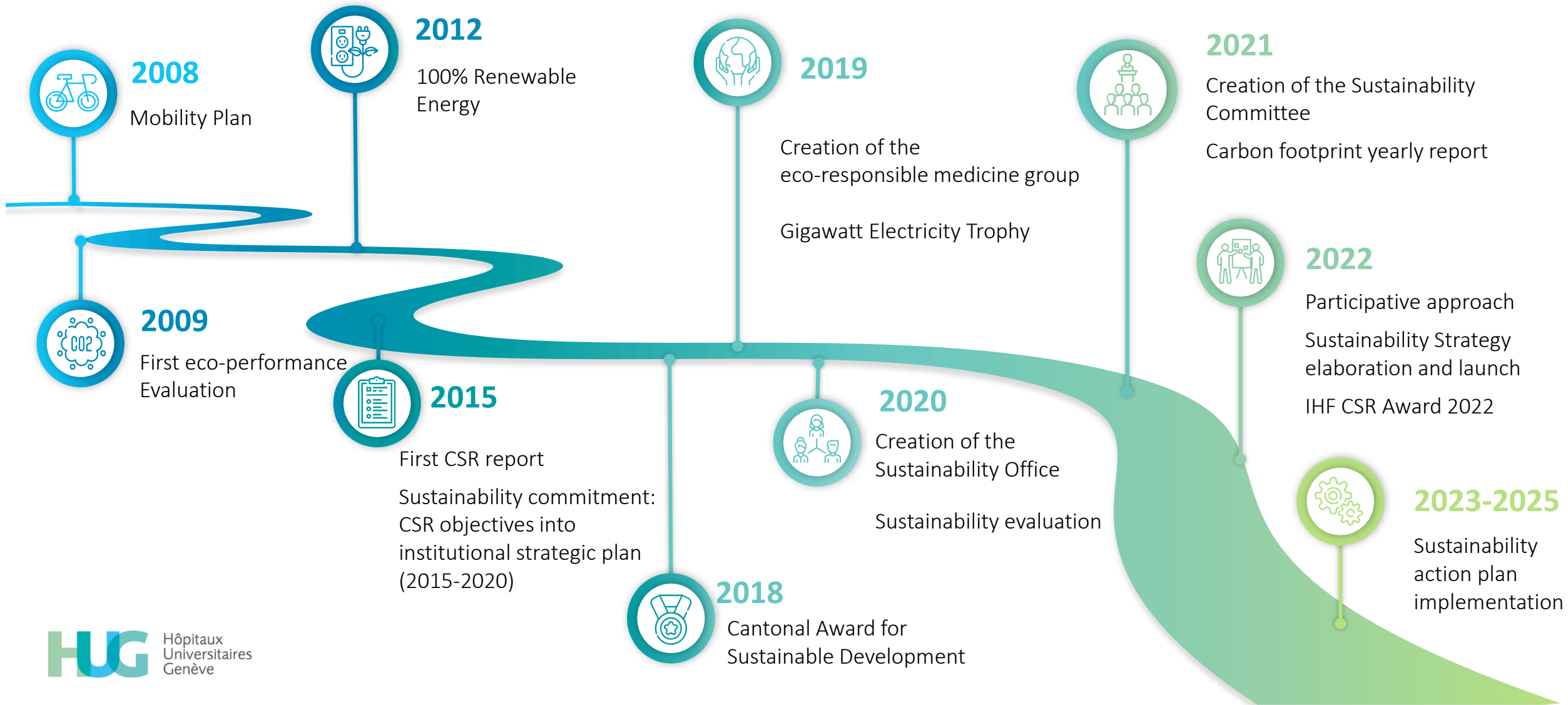
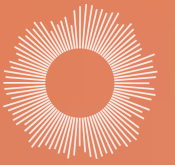


Getting the culture right



Institutional commitment

Since the 2000s environmental responsibility is integrated into institutional programs



Greener Care Initiative



Climate
and health



Equality,
diversity and inclusion



Sustainable
consumption and production

- ▶ Quantify the environmental impact of care units and medical & nursing practices
- ▶ Integrate the environmental dimension into medical and nursing practices
- ▶ Adopt more sustainable management of medication
- ▶ Reduce the use of single-use medical equipment

CLIMATE AND HEALTH

THE 2030 TARGETS

- ▶ Establish and implement a climate action plan
- ▶ Reduce energy consumption
- ▶ Produce and increase the use of renewable energy
- ▶ Promote sustainable building construction and renovation
- ▶ Reduce the effects of heatwaves and promote biodiversity
- ▶ Increase the use of sustainable mobility for commuting
- ▶ Reduce the environmental impact of business travel
- ▶ Quantify the environmental impact of care units and medical and nursing practices
- ▶ Integrate the environmental dimension into medical and nursing practices
- ▶ Adopt more sustainable management of medication
- ▶ Reduce the use of single-use medical equipment

NHS Sustainability journey



Sustainable Development Unit



**Saving Carbon,
Improving Health**



NHS CARBON REDUCTION STRATEGY FOR ENGLAND
January 2009

- 2008 – Climate Change Act – UK
- 2009 – First carbon footprint and carbon reduction strategy
- 2009 - Marginal Abatement Cost Curve
- 2015 – Sustainable Development Strategy
- 2019 - Greener NHS
- 2020 - Net Zero plan
- 2022 – Net Zero embedded in Legislation
- 2024 – NIHR and MRC grants

Classification: Official



**Delivering a 'Net Zero'
National Health Service**





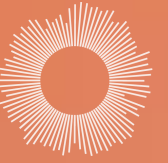
Wide-spread culture shift across the entire system: *Kaiser Permanente, United States*

Savings by integrating sustainability as a core value:

- Partnership with the state of California to pilot green microgrids – saved 263 tons of CO₂ annually and \$394K/year
- Energy efficiency investments saved \$20 million/year
- \$3 million/year from water saving investments
- Delivers over *\$63 million* in purchasing and operational cost savings

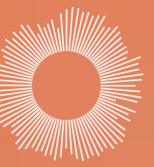


Return on Investment



- **Reprocessing medical devices** at Advocate Health (US) is saving **\$3.5 million** yearly
- Providence (US) over \$11 million annually through their sustainability efforts and hope to be saving **\$100 million annually** through its **sustainability programme**.
- In France, opting for day-case surgery saves **€3,921 per laparoscopic intervention**
- Switching from single-use to **reusable anaesthetic equipment** saved **£19,220/year** in a hospital in Australia

Sustainability as a Leadership Competency

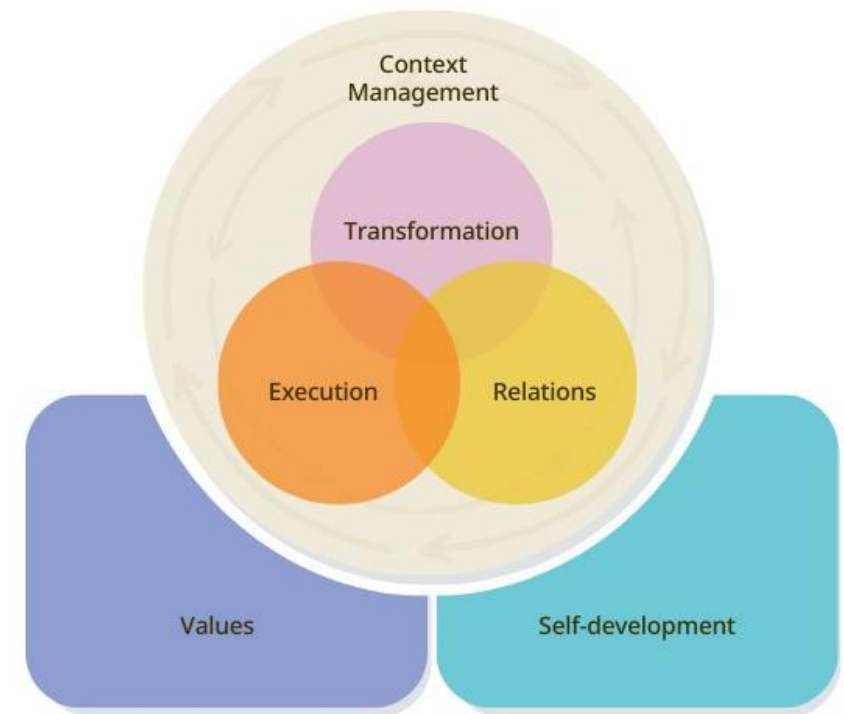


Sustainability is a leadership competency. All hospital executives should have the leadership and the agency to generate positive change.

Leadership commitment towards sustainability leads to:

1. Organizational success
2. Broader societal well-being

To implement net zero healthcare, hospital leaders must work across all domains of the IHF's Leadership Framework.

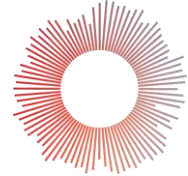


Supporting leaders *to accelerate action in their hospitals and to become leaders for sustainability in their communities*



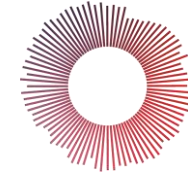
Information and capacity building

- Executive learning programme
- Carbon Emissions Learning Lab (CELL)
- Sustainability guides and case studies



Raising the standard and accelerating action globally

- Accreditation standards co-published with JCI
- Licensing option for other accrediting organizations
- Certification programme in development



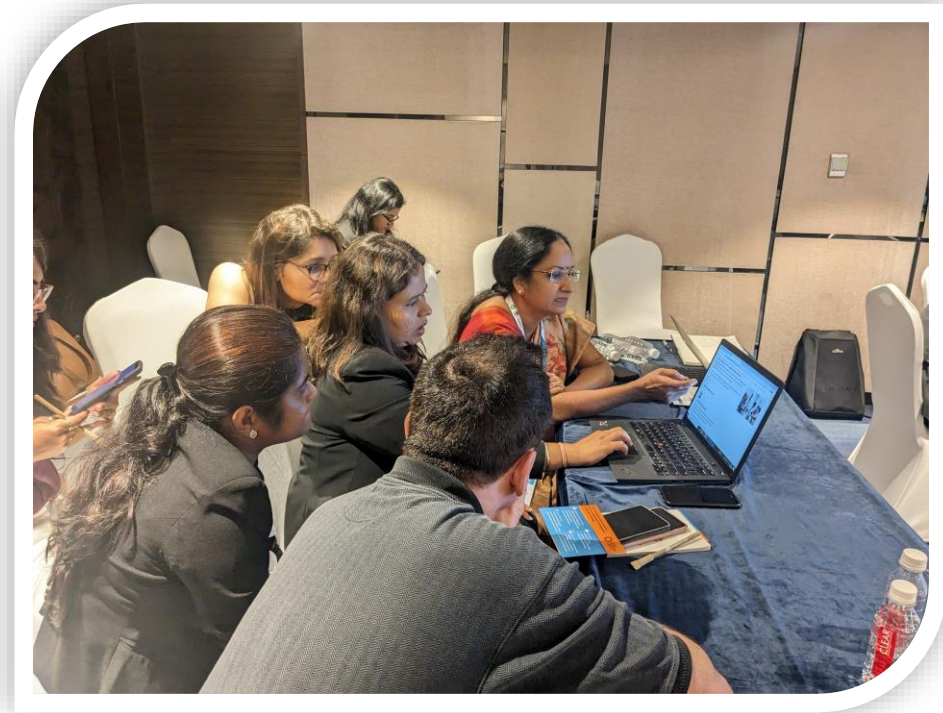
Strategic planning and progress

- Sustainability Accelerator Tool (SAT)
- Aligned with ESG reporting and hospital accreditation
- Consultancy support

Carbon Emissions Learning Lab (CELL)



- Simulation-based learning tool
- Sustainability-orientated decision-making



- Using real-world data
- Empowering healthcare leaders of today and tomorrow

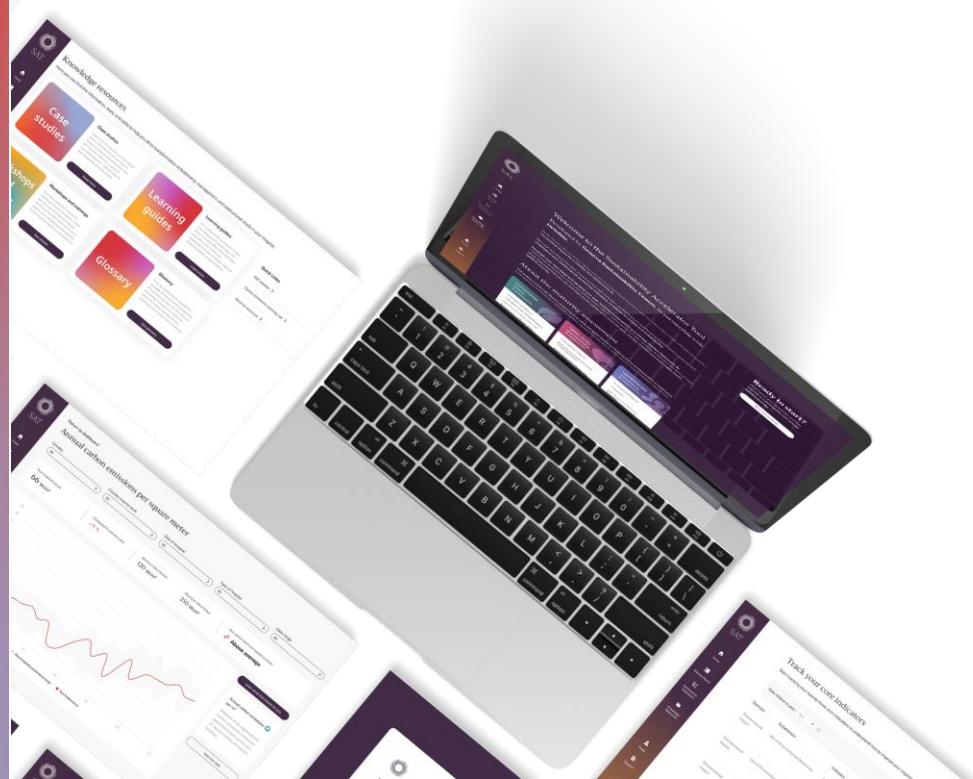
The GSC Sustainability Accelerator Tool

in collaboration with
Deloitte.

How can SAT benefit your hospital?

-  Effective and strategic decision-making supported by in-depth, comprehensive sustainability maturity insights.
-  Report and benchmark across hospital performance worldwide, providing sector intelligence.
-  Build sustainability capacity for executives and staff through learning resources - turning action into impact.

Live webinars and free trial demos [available](#)



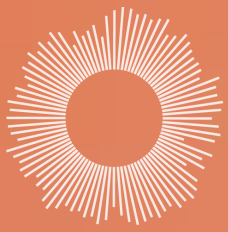
Accreditation Standards for Environmental Sustainability

in collaboration with



Accreditation standards for environmental sustainability co-developed with the [Joint Commission International](#) (JCI) in 2023.

- The standards to be published in July 2024 form a new “Global Health Impact” chapter in JCI’s 8th edition of Accreditation Standards for Hospitals.
- These standards will be made available to other accrediting organization globally through a licensing process.
- A certification programme for hospitals willing to demonstrate additional efforts towards net zero healthcare is in development and available early 2025.



Set the Framework:

- To encourage a culture of sustainability
- To accelerate action and innovation
- To agree standards and monitoring processes
- To incentivise progress

To consider regulatory and legislative mechanisms to support a rapid and smooth transition

Being a part of the solution

"To the health community, I urge you to take on the responsibility as climate champions"

Dr Tedros Adhanom Ghebreyesus, Director General - WHO, Dec 2023.



Call to Action!



Lead by
example



Foster a
culture of
sustainability



Secure a
sustainable
Singapore

Be the change maker



Thank you!

