

## **Project Title**

Wound Burst with Stoma

## **Project Lead and Members**

- Nguyen Thi Thuong
- Nguyen Thi Kim Phuong
- Vo Thi Thanh Tuyen
- Tran Nguyen Ngoc Vy
- Nguyen Ngoc Van
- Vo Duy Long
- Pham Ngoc Trung Vinh
- Bui Ngoc Minh Tam

## **Organisation(s) Involved**

University Medical Center (UMC) Vietnam

## **Healthcare Family Group Involved in this Project**

Medical

## **Aims**

- Providing the patient comfort
- Preventing odour from the wound and stoma leakage
- Extended wearing time of stoma bag
- Preparing the best wound bed for secondary wound closure

## **Background**

See poster appended / below

## **Methods**

See poster appended / below

**Results**

See poster appended / below

**Lessons Learnt**

See poster appended / below

**Conclusion**

See poster appended / below

**Additional Information**

Singapore Healthcare Management (SHM) Conference 2021 – Shortlisted Project  
(Patient Experience Category)

**Project Category**

Care & Process Redesign, Quality Improvement, Job Effectiveness, Value Based Care

**Keywords**

Stoma Care, Wound Management

**Name and Email of Project Contact Person(s)**

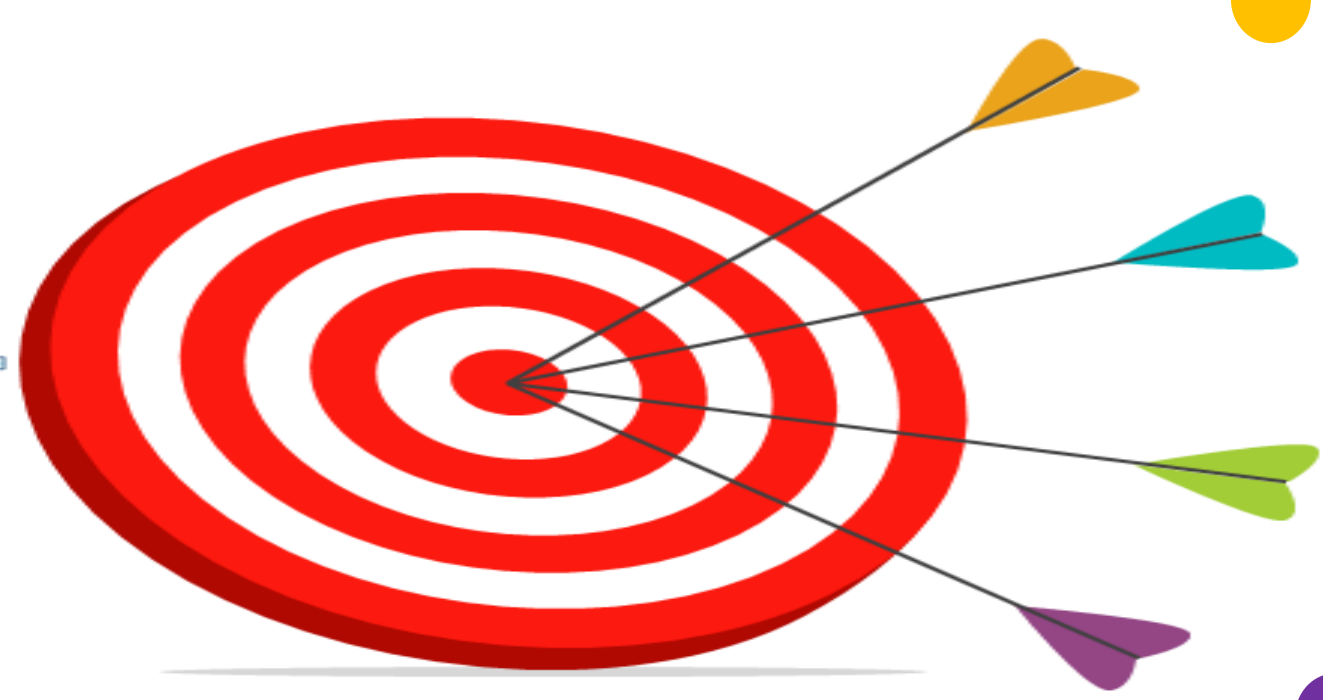
Name: Nguyen Thi Thuong

Email: singaporehealthcaremanagement@singhealth.com.sg

## INTRODUCTION

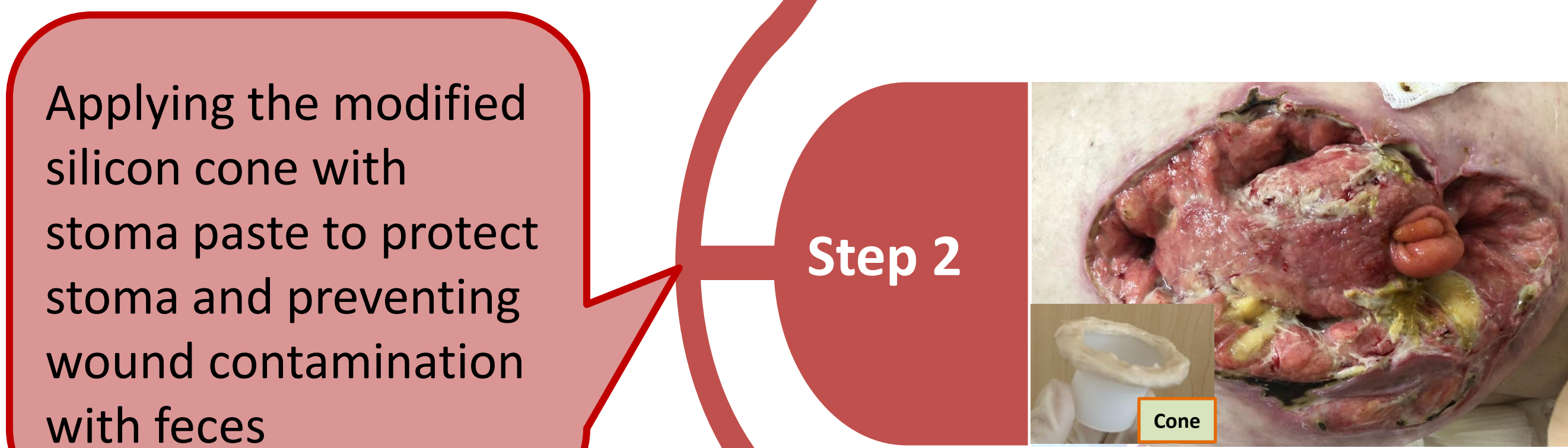
Stoma care is a challenging issue for both healthcare provider and patient. Moreover, the stoma lying on the huge wound burst with necrotic tissue further increases the level of difficulties for caring. The patient had to suffer the fluid and malodour of feces coming out from constant stoma bag leakage and the wound pain leading to physical exhaustion, mental affection and reduced quality of life.

## OBJECTIVES

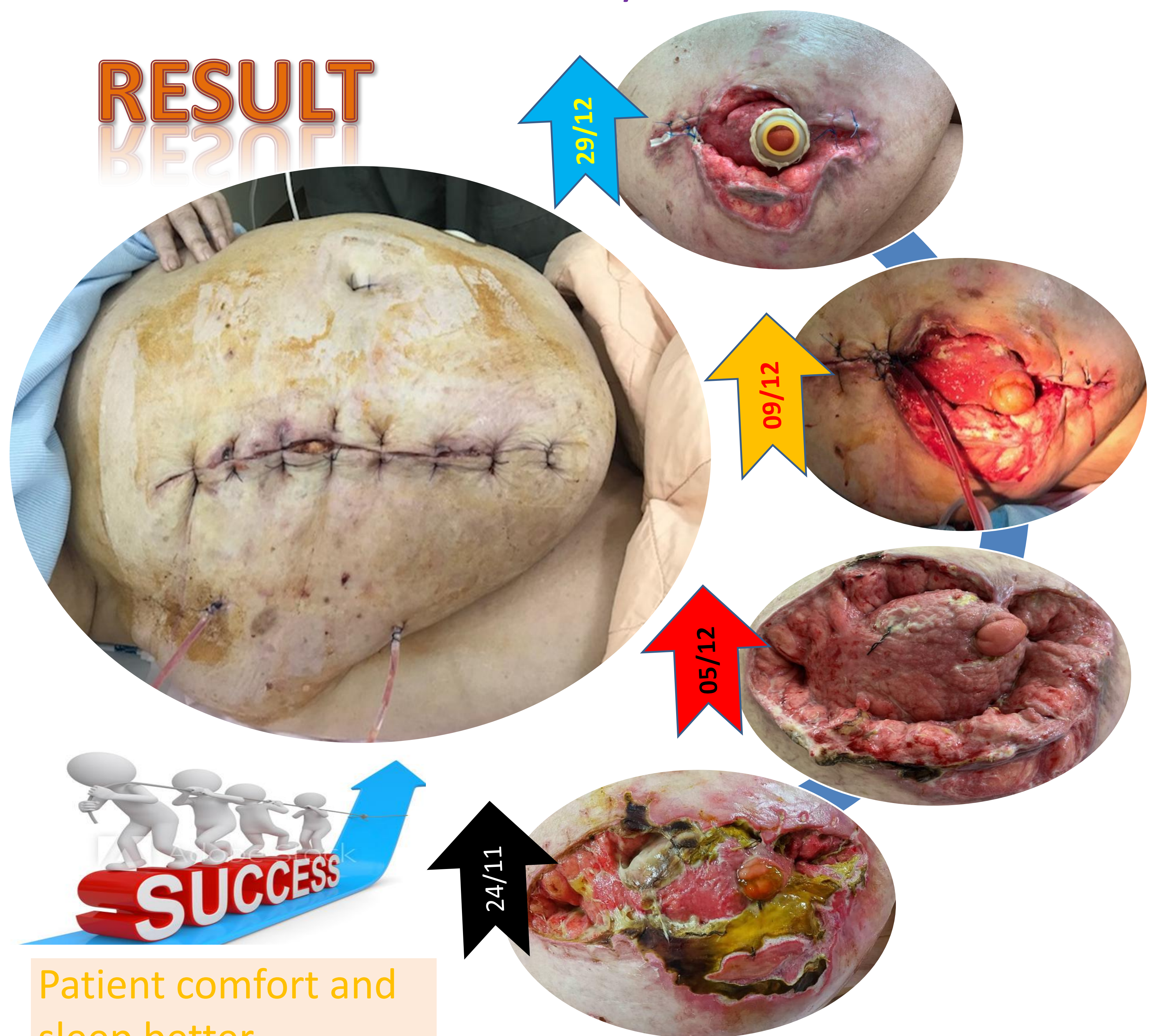


- Providing the patient comfort
- Preventing odour from the wound and stoma leakage
- Extended wearing time of stoma bag
- Preparing the best wound bed for secondary wound closure

## METHODOLOGY



## RESULT



Patient comfort and sleep better

Releasing smelly odor and decreasing painful and stinging feeling at the wound

Longer time of stoma bag attachment (only changing once per day comparing with 6 times per day before)

After 15 days, the wound closed a half and 20 days later, the wound totally closed.

## CONCLUSION

Administering the appropriate method in wound care, especially the specific wound burst with stoma will promote the proliferation of the wound bed, prepare for secondary wound closure and stoma reversal leading to patient comfort and enhanced quality of life.